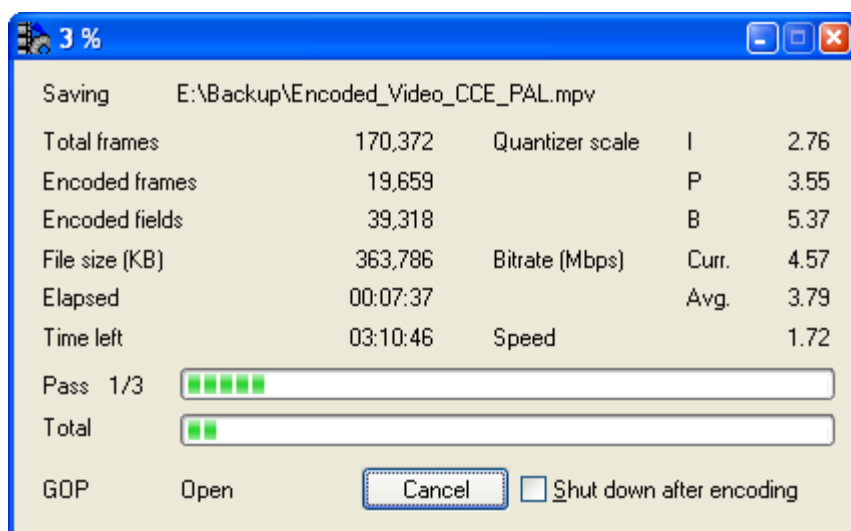


EcICCE - ECL support for CCE SP 2.66/2.67 trial



Release : 1.7b
Date : Wednesday, December 17, 2003
By : RB

Contents

1. What's this?	3
2. Usage	3
3. New features provided by EclCCE	4
3.1. Global Settings	4
3.2. Minimizing to tray	4
3.3. Loading multiple Encoder Control Lists	5
3.4. Bitrate Tweaking	5
4. Supported CCE versions	6
5. Help!	6
6. License	7
7. History	7

1. What's this?

EclCCE adds support for saving and loading ECL (Encoder Control List) files and a few new options to the Cinemacraft Encoder SP 2.66 and 2.67 trial versions. For earlier trial versions that have built-in ECL support (CCE SP 2.50 through 2.64), it can be used to add command line support.

2. Usage

Unzip all files to a directory of your choice, preferably to the CCE trial installation directory. Next, run EclCCE.exe. If you run EclCCE.exe for the first time, it will prompt you for the location of the CCE SP trial version executable. EclCCE will then launch CCE, hook into it and provide ECL loading/saving support (only for CCE SP 2.66.01.07 and up) so you can now use CCE's standard menu items and toolbar buttons to load and save ECL files. It's as simple as that! Note that when loading/saving ECL files, the CCE window will flash/flicker, this is normal because EclCCE simulates user input to get/set options in the CCE GUI to be written/read from/to the ECL.

EclCCE.exe supports the following command line switches (indicated by a leading hyphen/slash):

- ecl [filename] - Automatically loads ECL file [filename] at startup.
Remember to place long file names with spaces in quotes. CCE 2.66 retail version command line switch.
- encode - Start encoding automatically (ignored unless -ecl is specified)
- exit - Exit CCE when finished encoding (ignored unless -ecl and -encode is specified)
- batch - Same as -encode and -exit (combines the two options).
CCE 2.66 retail version command line switch.
- nocancel - Hides the Cancel button in the encode progress dialog.
You can still cancel encoding by pressing Esc or Alt-F4, you will be prompted to confirm canceling encoding.
- nochapterlist - workaround for a potential bug in the CCE SP 2.66 trial that causes excessive page file usage. Chapter list, encode range and per-file audio options will not be read/written from/to the ECL. Read [this page](#) for more information. This switch has no effect for CCE versions before 2.66.

This switch can also be set permanently by adding

ChapterList=0

to the [EclCCE] section in EclCCE.ini.
- shutdown - shuts down the system when encoding has finished (ignored unless -ecl and -encode is also specified)

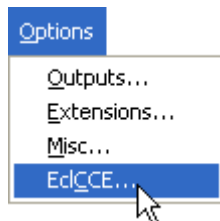
Example:

```
eclcce.exe -ecl "d:\Video\Some Movie\movie.ecl" -batch /nocancel
```

3. New features provided by EclCCE

When you run CCE under control of EclCCE, the following new features are available in CCE. **This requires at least CCE SP 2.66.01.07 or a CCE 2.67 version!**

3.1. Global Settings



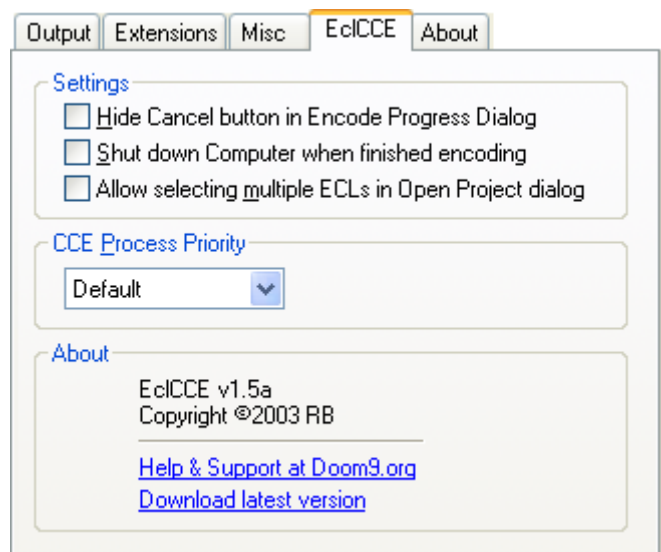
To access EclCCE global settings, open the Options menu in the CCE main window and click "EclCCE...".

The "Hide Cancel button in Encode Progress Dialog" just does what it says, so you can't accidentally abort encoding. You can still abort encoding by pressing Esc or Alt-F4 in which case you will be prompted to confirm canceling encoding.

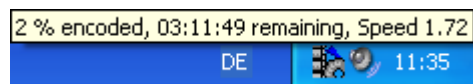
"Shut down Computer when finished encoding" will shut down the system when encoding has finished. Shutdown will not be initiated when you prematurely cancel encoding. This option can also always be enabled and disabled for the current encoding job(s) in the Encode Progress dialog, but this will not affect this global setting. There will be a 15 seconds countdown before the system actually shuts down during which you have a last chance to cancel the shutdown.

For information on the "Allow selecting multiple ECLs in Open Project dialog" read **3.3 Loading multiple Encoder Control Lists**.

The CCE Process Priority option lets you specify how much computing power the system reserves for the CCE process. "Default" means that CCE gets assigned whichever priority EclCCE.exe was run with. This option actually has little influence on encoding speed and you should set it to "Idle" if you like to work in other programs during the CCE encoding process. You'll have to restart CCE via EclCCE for changes to this option to take effect.



3.2. Minimizing to tray



Ever disliked the fact that CCE is "in your face" all the time while it encodes? Well, now it is possible to minimize CCE to the

system tray. Simply click the Minimize button in the Encode Progress dialog's caption. Move the mouse pointer over the CCE tray icon to see some statistics and click it to bring CCE back.

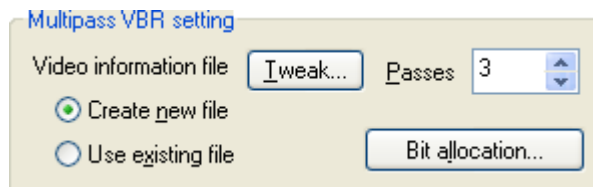
3.3. Loading multiple Encoder Control Lists

It is now possible to load multiple ECL files into CCE simultaneously. Simply load as many ECL files as you want via File - Open - Project... (you can select multiple *.ecl files in the Open Project dialog) or drag and drop them into the CCE window. If you want to use EclCCE with DVD2SVCD, please make sure the "Allow selecting multiple ECLs in Open Project dialog" option in Global Settings (see **3.1 Global Settings**) is **not** enabled. You can still open multiple ECL files in this case, you just won't be able to select multiple ECL files in the Open Project dialog (use drag and drop or open each ECL separately instead).

When you save the project, everything will be saved to a new Encoder Control List file containing all items.

3.4. Bitrate Tweak

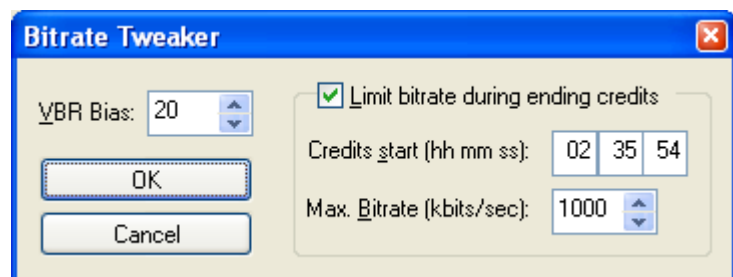
To access this feature, double click on an item in the list of files to encode in the CCE main window to bring up the Encode Settings dialog.



This option is available only when multipass VBR encoding mode and the option to create a new video information file is selected. Now click the "Tweak..." button. You can now modify the VBR Bias setting prior to the encode (more

information on the VBR Bias can be found in the CCE manual) and limit the bitrate that CCE will use to encode a certain part at the end of the video, typically, the ending credits. Scrolling ending credits are actually difficult to encode (white text means high contrast, scrolling means a lot of motion) so most of the time the encoder uses a unnecessarily high bitrate for this part, usually around the average bitrate of a multipass VBR encode. Of course, this bitrate is much better spent on the actual movie.

Enter the time code of the ending credits start in hours, minutes and seconds. **Note that this timecode is interpreted relative to the Timecode setting in the Encode setting dialog!** It is best to use the CCE "File Settings" dialog to find the correct time code. To do this, click "Setting..." to the right of the Input Files combo box in the Encode Settings dialog. Click the "Options" menu item in the menu bar and select "Specify chapter by Timecode", click OK and double click on the item in the files list. Drag the Frame Search slider to find the start of the end credits and make a note of the first three number to the right of the slider. This is the time code we have been looking for. The Max. Bitrate setting limits the maximum bitrate used from this point on, so CCE will automatically allocate more bitrate to the main movie.



The settings in this dialog will also be saved/loaded to/from the ECL. The following three new ECL options are supported in the [item] sections:

```
credits_tweak=value  
credits_start=0xtimecode  
credits_brake=bitrate
```

Where **value** is either 0 or 1 to disable/enable the bitrate modification, **0xtimecode** is the start time of the ending credits encoded as a hexadecimal concatenation of hour, minute and second and **bitrate** specifies the bitrate. For our example, this would read:

```
credits_tweak=1  
credits_start=0x22336  
credits_brake=1000
```

4. Supported CCE versions

This 1.7a version of EclCCE will work with the following CCE SP 2.66/2.67 trial versions:

- 2.67.00.23
- 2.67.00.22
- 2.67.00.21
- 2.67.00.20
- 2.67.00.19
- 2.67.00.18
- 2.67.00.17
- 2.67.00.13
- 2.67.00.12
- 2.67.00.11
- 2.67.00.10
- 2.67.00.09
- 2.67.00.08
- 2.66.01.07

For versions before 2.66.01.07, the only benefit of EclCCE is the command line support.

You get the latest CCE SP trial version at <http://www.cinemacraft.com/jpn/download.html>.

5. Help!

For suggestions, bug reports, general discussion and reporting new CCE versions, please register at <http://forum.doom9.org> and post to the following thread: <http://forum.doom9.org/showthread.php?s=&threadid=46664>

If you feel like you absolutely need to contact me directly, again register at <http://forum.doom9.org> and send member **RB** (me) a private message.

6. License

EclCCE is freeware and may be freely distributed, provided that it is free of charge and this document is included in the distribution. However, my permission is required for redistributing EclCCE as part of any software that can use any of the CCE versions supported by EclCCE to perform video encoding. In this case, send me a private message at Doom9 (see above) to request permission.

7. History

17/12/2003 v1.7b

- Added support for CCE-SP 2.67.00.21 through 2.67.00.23

23/10/2003 v1.7a

- Added support for CCE-SP 2.67.00.18 and 2.67.00.20

16/10/2003 v1.7

- Added support for CCE-SP 2.67.00.17 and 2.67.00.19

25/07/2003 v1.6

- Added support for CCE-SP 2.67.00.12 and 2.67.00.13

10/06/2003 v1.5c

- Added support for CCE-SP 2.67.00.11

30/05/2003 v1.5b

- Fixed issue with Bitrate Tweaking feature that would sometimes cause CCE to crash after the last pass.

26/05/2003 v1.5a

- Added option to prevent accepting multiple selections in the Open Project dialog to make EclCCE compatible with DVD2SVCD again (broken in 1.5).
- Fixed bug in command line support for CCE versions prior to 2.66.01.07

22/05/2003 v1.5

- Fixed: dragging and dropping ECL files into the CCE window was not possible (trial version limitation)
- Added support for loading of multiple ECL files simultaneously
- It is no longer possible to accidentally select EclCCE.exe for the CCE-SP executable when EclCCE runs for the first time.

12/05/2003 v1.4c

- Fixed the "CCE did not finish initializing in a timely manner" error

02/05/2003 v1.4b

- Fixed: Advanced VBR Settings dialog was visible during automated bitrate tweaking even though CCE was minimized to tray
- Fixed: Shutdown feature didn't work when using bitrate tweaking

25/04/2003 v1.4a

- Added support for CCE 2.67.00.10
- Added ability to minimize CCE to the system tray during encoding

16/04/2003 v1.4

- Added option to shut down system after encoding
- Added EclCCE settings dialog along with the ability to specify the CCE process priority
- Added a manifest file for CCE to the distribution. Copy cctspt.exe.manifest to the CCE installation directory to apply Windows XP visual styles.
- Fixed: CCE window title was set incorrectly when ECL file name contained a dash
- Fixed: in some cases Encoding did not start when clicking Yes in the "Save changes....?" prompt and then canceling the Save dialog.
- Fixed: in some cases you were not prompted to save changes after modifying the Bitrate Tweak settings.
- Fixed: problem with hooking into CCE when EclCCE.exe was run with process priorities above "Normal".

27/03/2003 v1.3a

- Fixed: Bitrate tweaking feature didn't take effect when encoding was started by clicking the "Encode Now" button in Encode Settings dialog.

25/03/2003 v1.3

- Added bitrate tweaking feature.

11/03/2003 v1.2

- Added command line support for earlier CCE SP trial versions
- Added support for CCE 2.67.00.09

05/03/2003 v1.1a

- Added -nochapterlist command line switch

26/02/2003 v1.1

- Added support for CCE 2.67.00.08

22/02/2003 v1.01

- Added support for CCE 2.66 retail -batch command line switch
- Added -nocancel command line switch

21/02/2003 v1.0

- First release. Supports CCE 2.66.01.07